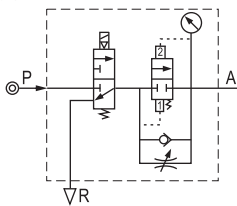


GV Series soft-start valve



GV

Symbol

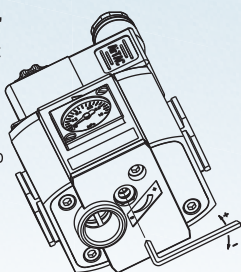


Product feature

Soft start-up valve is used to input compressed air into pneumatic system slowly and has the effect of safety and protection. Air intake is connected with the input P of Soft start-up valve. If coil is energized, the 3/2 way valve opens. At this time, a little air comes to output A through throttle valve, which increases the pressure of the system gradually; when the output pressure is equal the half of the input pressure, Soft start-up valve completely opens and the flow at this time reaches the highest value of itself. When the coil is de-energized, air intake P closes, the air returns to R orifice through reflux valve and is quickly exhausted. The pressure of the system falls to zero, which protects the whole system.

Attention

Manually adjust the "+" and "-" throttle screw at the bottom of the soft start-up valve as per the requirement of start speed. It shall go slowly, otherwise sudden acting of the product or system shall be caused with a heavy impact.



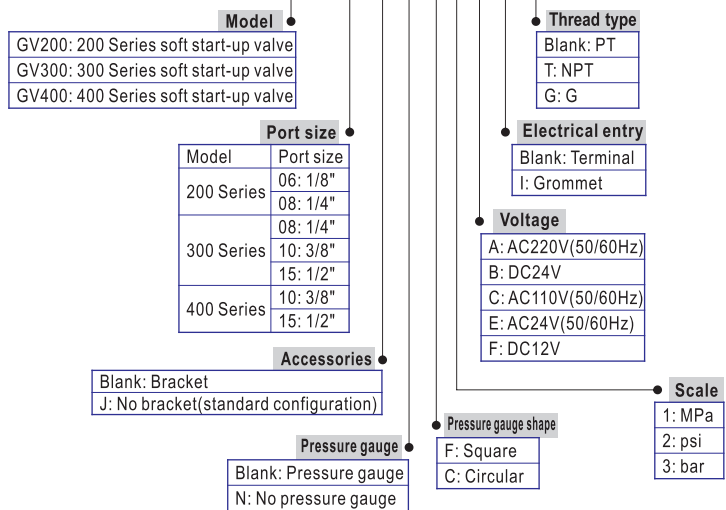
Specification

Model	GV200-06	GV200-08	GV300-08	GV300-10	GV300-15	GV400-10	GV400-15
Fluid	Air						
Port size	1/8"	1/4"	1/4"	3/8"	1/2"	3/8"	1/2"
Pressure range	0.25~0.9MPa(35~130psi)						
Proof pressure	1.5MPa(215psi)						
Temperature range	-20~70°C						
Acting type	Solenoid control						
Exhaust port size	1/4"		3/8"			1/2"	
Power connection	Terminal, Grommet						
Standard voltage	AC220V, 110V, 24V(50/60Hz); DC12V, 24V						
Voltage range	-15%~+10%						
Insulation	Class B						
Power consumption	AC: 3.5VA; DC: 2.5W						
Option pressure gauge	F: Square pressure gauge; C: Circular pressure gauge						
Suitable F.R.L type	GC200-06	GC200-08	GC300-08	GC300-10	GC300-15	GC400-10	GC400-15

① PT thread, NPT thread and G thread are available.

Ordering code

GV300 10 □ □ F 1 A □ □



Note: When it is used with F.R.L. combination, extra mounting bracket is need. Please refer to P148 for order detail.

Inner structure

No.	Item	No.	Item	No.	Item
1	Bottom cover	13	Gasket	25	Spring
2	Gasket	14	Gasket	26	Manual override
3	Spool	15	Pilot kit	27	Fixed screw
4	Body	16	spring	28	Spring
5	O-ring	17	Fixed lplate	29	Valve spool
6	O-ring	18	Coil set	30	O-ring
7	Spring	19	Nut	31	Valve spool
8	Inlet piston	20	Connector	32	O-ring
9	Piston gasket	21	Spring	33	O-ring
10	O-ring	22	O-ring	34	Inlet plug
11	Snap ring	23	Manual override block		
12	Gasket	24	O-ring		

Dimensions

Item\Model	GV200		GV300		GV400	
	06	08	08	10	10	15
A	80		95		120	
AB	59		74		90	
B	57		62.2		80	
BA	24.5		31.5		40.5	
C	123.5		131		142.5	
K	5.5		6.5		8.5	
KA	67		82		102	
KB	8		8		11	
KC	30.5		34.5		39	
P	1/8"	1/4"	1/4"	3/8"	1/2"	3/8"
PA	30		34		40.5	
Q	1/4"		3/8"		1/2"	