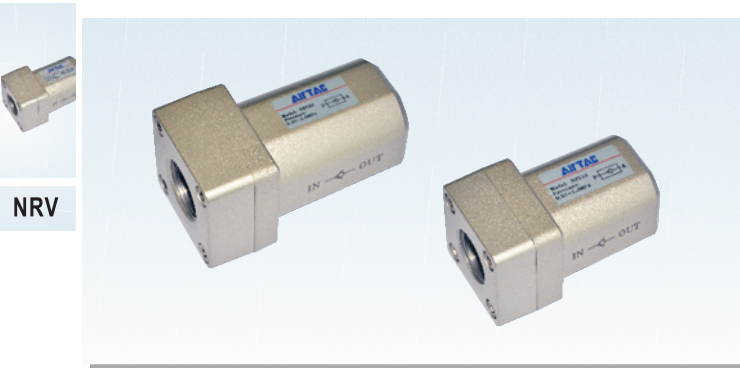


# Non-return valve

## NRV Series



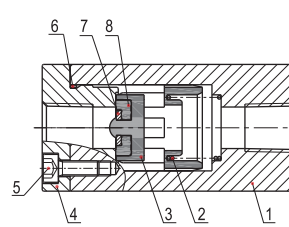
### Specification

Model	NRV06	NRV08	NRV10	NRV15	NRV20	NRV25
Fluid	Air (to be filtered by 40 μm filter element)					
Port size <sup>①</sup>	1/8"	1/4"	3/8"	1/2"	3/4"	1"
Orifice size mm <sup>2</sup> (Cv valve)	18(1.0)	27(1.5)	60(3.33)	73(4.06)	230(12.78)	260(14.44)
Pressure range	0.02~1.0MPa(2.9~145psi)					
Proof pressure	1.5MPa(215psi)					
Temperature	-20~70°C					
Material body	Aluminum alloy					

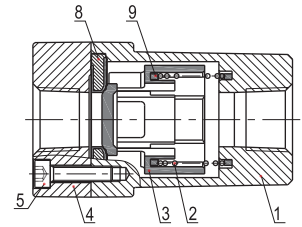
Note ①: PT thread, NPT thread and G thread are available.

### Inner structure

NRV06, 08



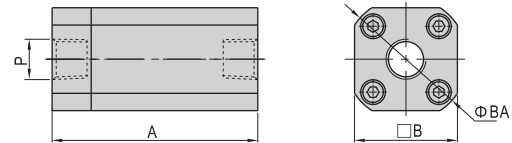
NRV10, 15, 20, 25



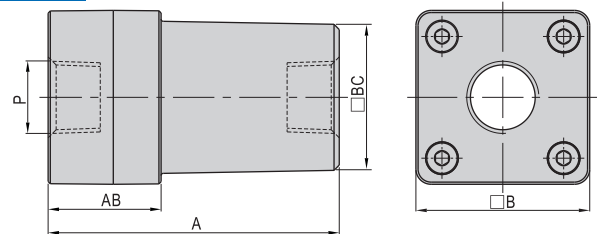
No.	Item	Material
1	Body	Aluminum alloy
2	Spring	Stainless steel
3	Spool	POM
4	End cover	Aluminum alloy
5	Screw	Carbon steel
6	O-ring	NBR
7	Washer	SPCC
8	Gasket washer	NBR/Aluminum alloy+NBR
9	Bumper	NBR

### Dimension

NRV06, 08

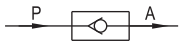


NRV10, 15, 20, 25



Model/Item	A	AB	B	BA	BC	P
NRV06	50	-	25	30	-	1/8"
NRV08	50	-	25	30	-	1/4"
NRV10	67	26	40	-	33.6	3/8"
NRV15	67	26	40	-	33.6	1/2"
NRV20	95	31.5	52	-	46.7	3/4"
NRV25	95	31.5	52	-	46.7	1"

### Symbol

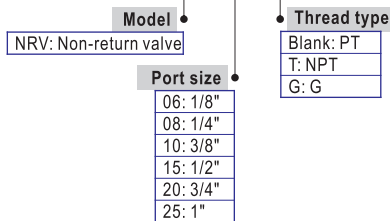


### Product feature

1. There are many port sizes: 1/8", 1/4", 3/8", 1/2", 3/4", 1".
2. It allows the fluid to flow in one direction **ONLY**.
3. It is prevent backflow due to sudden drop in pressure or decrease in air consumption .
4. There is large valid area of section.
5. The spool is made of POM, valve's core sealed with rubber, and it has a compact structure.

### Ordering code

#### NRV 08



### Flow chart

