

## PCV series



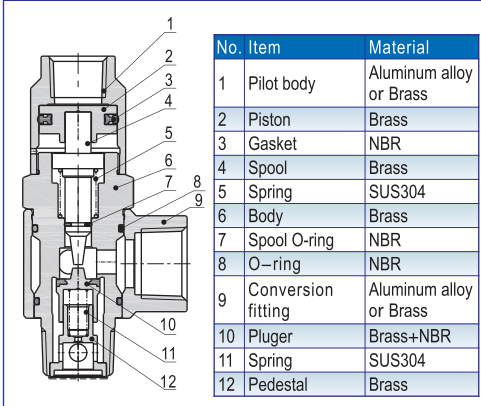
### Symbol



### Product feature

1. Can be used for safety loop of pressure holding.
2. Can make cylinder momentary stop, accurate orientation.
3. Can be used special loop.
4. Fitting joint type is used for pilot port, which saved space and improve efficiency of installation.

### Inner structure



### Specification

Model	PCV06	PCV08	PCV10	PCV15	PCV06F	PCV08F	PCV10F	PCV15F
Fluid	Air(to be filtered by 40 μm filter element)							
Operating pressure range	0.1~1.0MPa							
Proof pressure	1.5MPa							
Temperature range	-20~70(°C)							
Operating frequency	60(Cycle/minute)		40(Cycle/minute)		60(Cycle/minute)		40(Cycle/minute)	
Port size ①	1/8"	1/4"	3/8"	1/2"	1/8"	1/4"	3/8"	1/2"
Pilot port size	M5X0.8	1/8"	1/4"	1/4"	Φ6	Φ6	Φ8	Φ8

① PT thread, G thread are available.

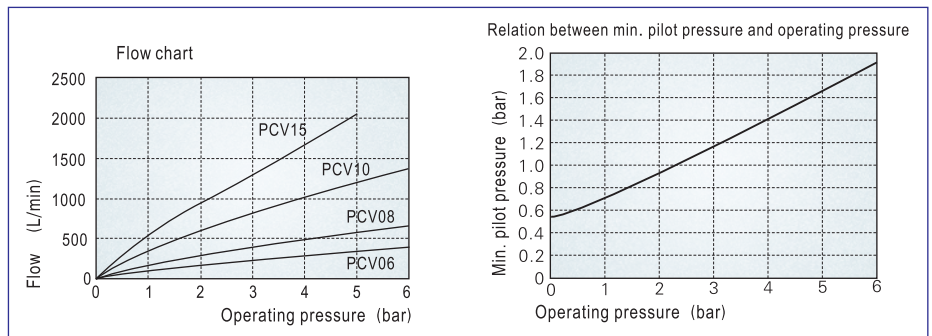
### Ordering code

**PCV 06** □ □

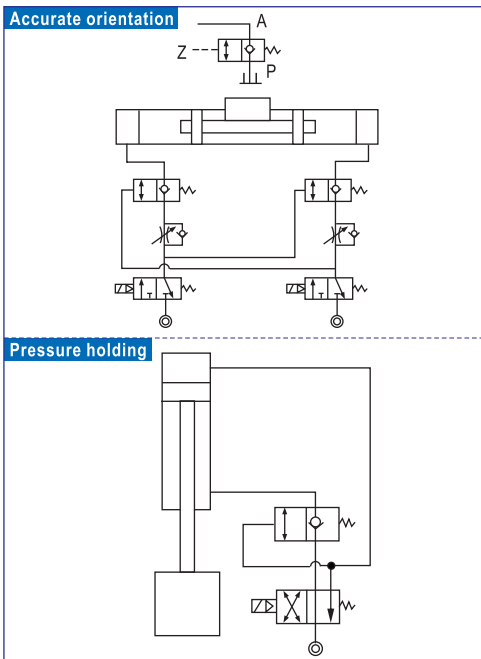
- Model**: PCV: Pilot no-return valve
- Thread type**: Blank: PT, G: G
- Port size**: 06: 1/8", 08: 1/4", 10: 3/8", 15: 1/2"
- Pilot port type**:
 

Pilot port type	Pilot port size	Inlet/outlet port size
Blank: Female thread	M5X0.8	1/8"
	1/8"	1/4"
	1/4"	3/8", 1/2"
F: Fitting	Φ6	1/8", 1/4"
	Φ8	3/8", 1/2"

### Flow chart, Relation between min. pilot pressure and operating pressure



### Typical application



### Dimensions

PT Thread											G Thread										
Item Model	C	CA	D	EA	EB	HA	HB	RA	RB	RC	Item Model	C	CA	D	EA	EB	HA	HB	RA	RB	RC
PCV06	48.5	7.5	-	16	16	14	12	PT1/8	PT1/8	M5X0.8	PCV06G	48.5	5.5	-	16	19	14	12	G1/8	G1/8	M5X0.8
PCV08	59	10	-	20.3	21	17	14	PT1/4	PT1/4	PT1/8	PCV08G	59	6.5	-	20.3	24	17	14	G1/4	G1/4	G1/8
PCV10	74.5	11	-	25	26	22	17	PT3/8	PT3/8	PT1/4	PCV10G	74.5	7.5	-	25	30.5	22	17	G3/8	G3/8	G1/4
PCV15	79.5	14	-	28	29.5	24	19	PT1/2	PT1/2	PT1/4	PCV15G	79.5	9	-	28	34.5	24	19	G1/2	G1/2	G1/4
PCV06F	58.5	7.5	6	16	16	14	-	PT1/8	PT1/8	-	PCV06FG	58.5	5.5	6	16	19	14	-	G1/8	G1/8	-
PCV08F	67	10	6	20.3	21	17	-	PT1/4	PT1/4	-	PCV08FG	67	6.5	6	20.3	24	17	-	G1/4	G1/4	-
PCV10F	82	11	8	25	26	22	-	PT3/8	PT3/8	-	PCV10FG	82	7.5	8	25	30.5	22	-	G3/8	G3/8	-
PCV15F	87	14	8	28	29.5	24	-	PT1/2	PT1/2	-	PCV15FG	87	9	8	28	34.5	24	-	G1/2	G1/2	-